

Store at -20°C. Stable for at least 50 freeze-thaw cycles. It is also stable at 4°C for 30 days.

Volume:

2500 µl (for 500 app.)

Description:

This marker consists of 9 fragments, and ready to use:

23130bp, 9416bp, 6557bp, 4361bp, 2322bp, 2027bp, 564bp, 125bp.

The approximate mass of DNA in each of the bands is total 50ng/ul

They are all double-stranded DNA fragments.

10X Gel Loading Dye, Blue:

50% Glycerol

100 mM EDTA

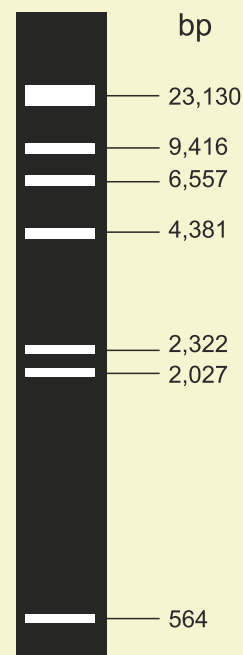
33 mM Tris-HCL (pH 8.0@25°C)

0.15% bromophenol blue

Usage notes:

We recommend loading **5µl** of λ/HindIII DNA Marker in each lane.

This ladder was not designed for precise quantification of DNA mass but can be used for approximating the mass of DNA in comparably intense samples of similar size.



λ/HindIII DNA Marker visualized by ethidium bromide staining on a 0.7% TAE agarose gel.

Product Use Limitations:

This product is developed, designed and sold exclusively for research purposes and in vitro use only.